

Anti-Collagen III Rabbit pAb

ABC111647 -20°C

Product Information	
Protein full name	Collagen alpha-1(III) chain
Synonyms	COL3A1, EDS4A, collagen type III alpha 1, collagen type III alpha 1 chain
Immunogen	Recombinant protein corresponding to Mouse Collagen III
Uniprot ID	P08121
Isotype	IgG
Purity	Affinity purification
Subcellular location	Secreted
Predicted MW. / Observed MW.	138 kDa / 140-220 kDa

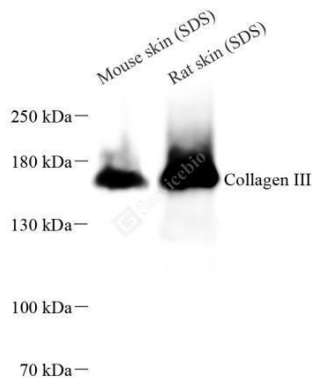
Applications			
WB	Mouse, Rat	1: 500-1: 1000	skin
IHC/IF	Human, Mouse, Rat	1: 250-1: 1000	kidney, liver, lung

Storage	
Storage	Store at -20°C for one year. Avoid repeated freeze/thaw cycles.
Storage Buffer	PBS with 0.02% sodium azide, 100 µg/mL BSA and 50% glycerol.

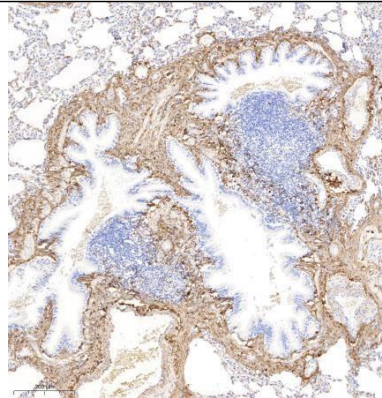
Background

This gene encodes the pro- $\alpha 1$ chains of type III collagen, a fibrillar collagen that is found in extensible connective tissues such as skin, lung, uterus, intestine and the vascular system, frequently in association with type I collagen. Mutations in this gene are associated with Ehlers-Danlos syndrome types IV, and with aortic and arterial aneurysms. Two transcripts, resulting from the use of alternate polyadenylation signals, have been identified for this gene.

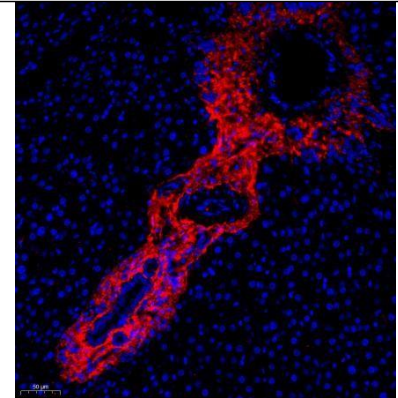
Images



WB analysis of collagen III (ABC111647).
 Sample: Protein treated by RIPA Lysis Buffer, ☆sample of skin treated by RIPA+SDS Lysis Buffer.
 Blocking buffer: 3% Nonfat dry milk in TBST, RT, 1h.
 Primary antibody: 1: 1000, 4°C overnight.
 Secondary antibody: HRP Goat Anti-Rabbit IgG, 1: 3000, RT, 1h.



IHC analysis of collagen III (ABC111647).
 Sample: Rat lung (Paraffin), 4% PFA 12-24h. Antigen retrieval: Pepsin Antigen Repair Solution, 37°C, 30min.
 Blocking buffer: 3% BSA in PBS, RT, 30min. Primary antibody: 1: 500, 4°C overnight.
 Secondary antibody: HRP Goat Anti-Rabbit IgG, 1: 200 RT 1h.



IF analysis of collagen III (ABC111647).
 Sample: Rat liver (Paraffin), 4% PFA 12-24h. Antigen retrieval: Pepsin Antigen Repair Solution, 37°C, 30min.
 Blocking buffer: 3% BSA in PBS, RT, 30min. Primary antibody: 1: 1000, 4°C overnight.
 Secondary antibody: Cy3 conjugated Goat Anti-Rabbit IgG (H+L), 1: 300 RT, 1h.

For Research Use Only!
 Ver. No.: V1.0-202202